

## P82 Machine Control Replacement

**Applies to**  
P82 consoles.

**Tools Required:**

- #1 Phillips screwdriver
- 5/32" hex wrench
- 3/8" socket
- Electrostatic discharge (ESD) mat and wrist strap

**Parts Required:**

QTY	Part Number	Description
1	300350-110 (double toggle) or 300350-112 (single toggle)	Machine control assembly
1	13012-010	Nyogel

**Removal Instructions:**

Review entire procedure before starting.

1. Remove rear access panel.
2. Remove the four console mounting bolts and disconnect all wires. See [Console Installation and Removal](#).
3. Remove the console from the unit and place on an electrostatic discharge (ESD) mat.

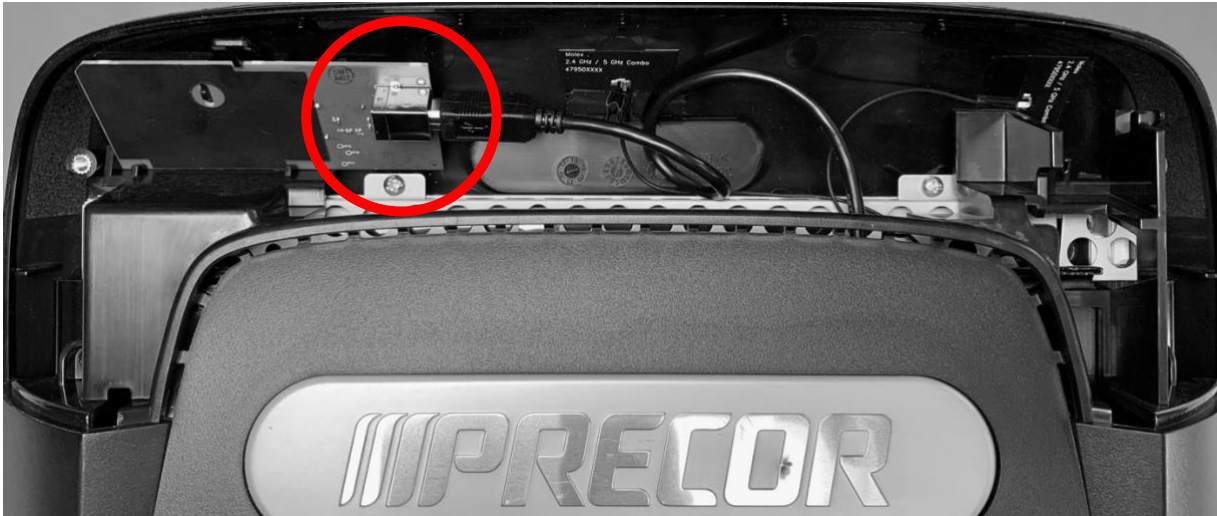


**Caution:** Failure to properly use an ESD mat and wrist strap can result in damage to the console.

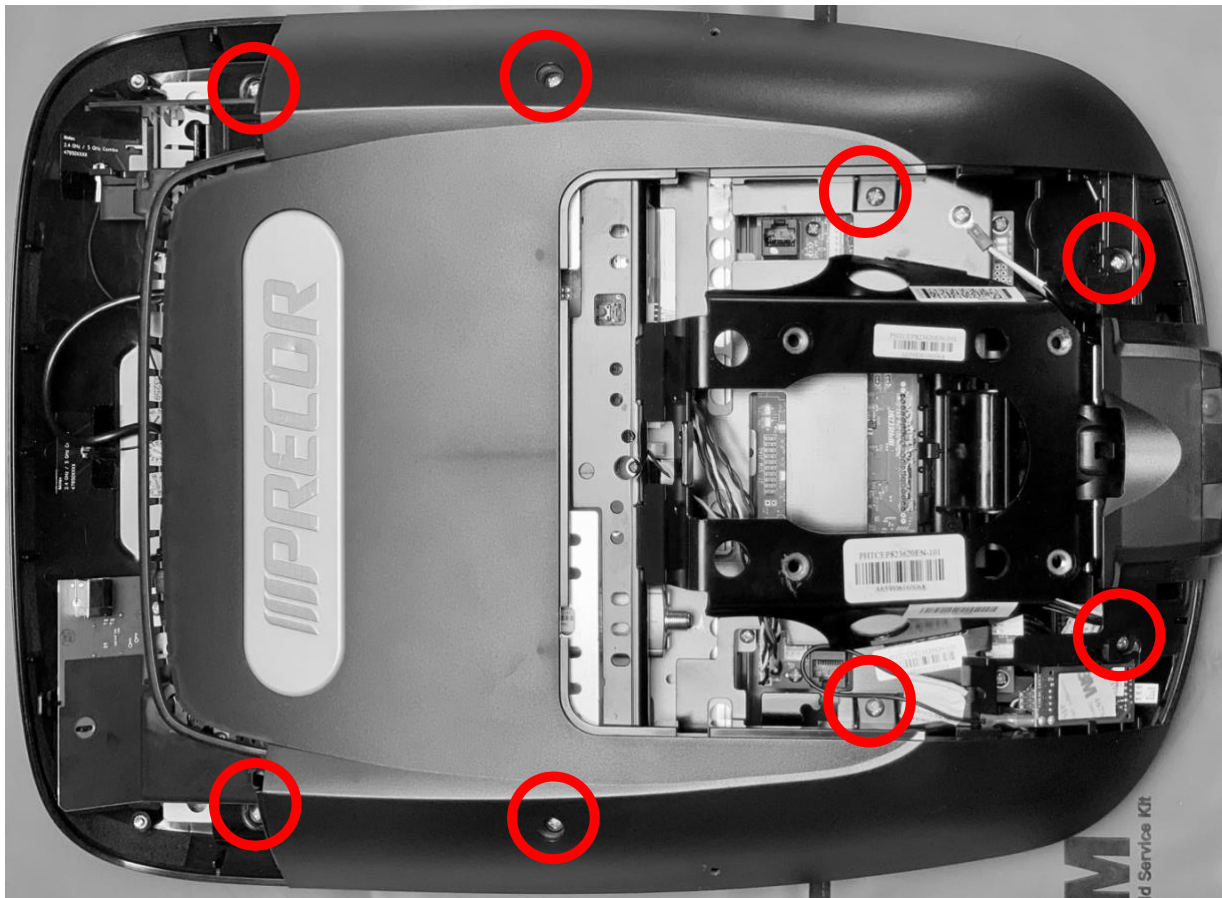
4. Remove the two Phillips screws securing the upper access panel and the two Phillips screws securing the reading rack. Remove both.



5. Unplug the RFID cable from the RFID board.



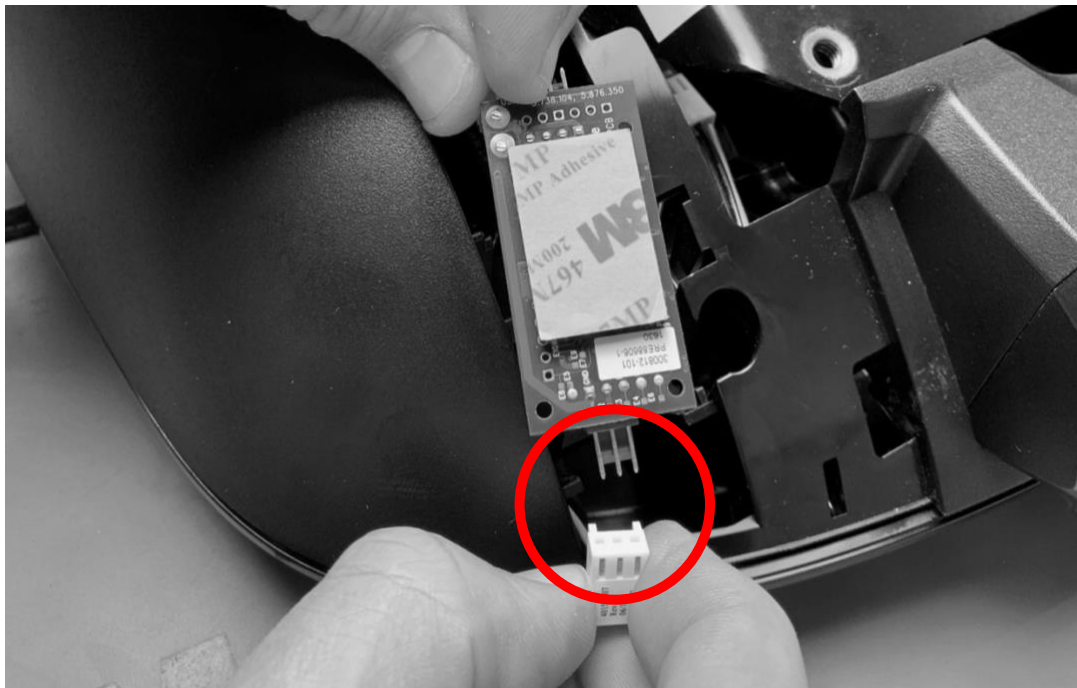
6. Remove the eight Phillips screws securing the back cover.



7. Remove the chin assembly. Turn sideways and slip through opening.

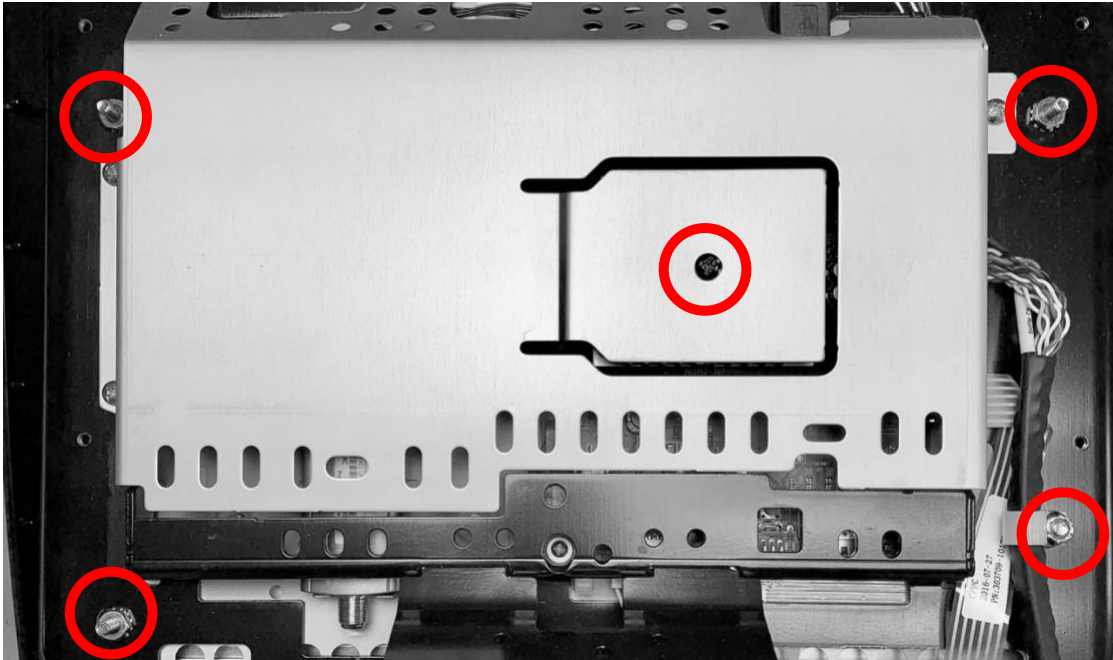


8. Gently flip the rear cover to the left side, remove the heart rate board, and disconnect the heart rate connector. Leave ground wire attached and set the cover down.

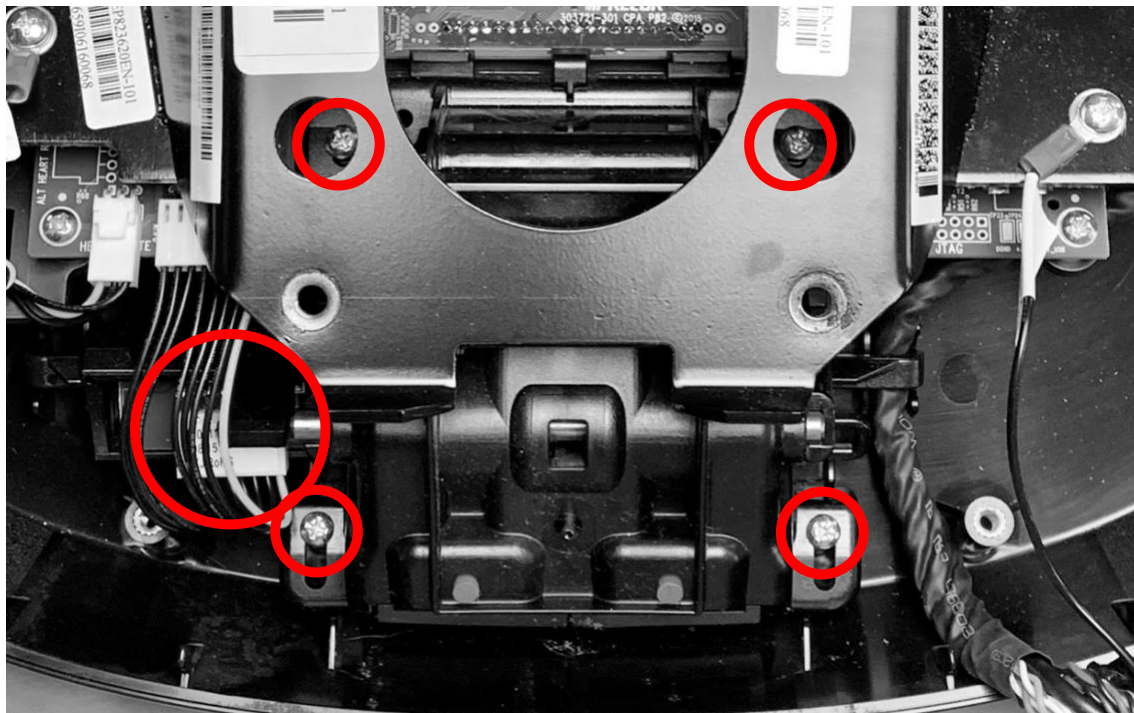




9. Remove the four 3/8" nuts securing the console frame and the center screw on the service bracket. Note the lower right nut is a double nut which is used to secure the cable run.



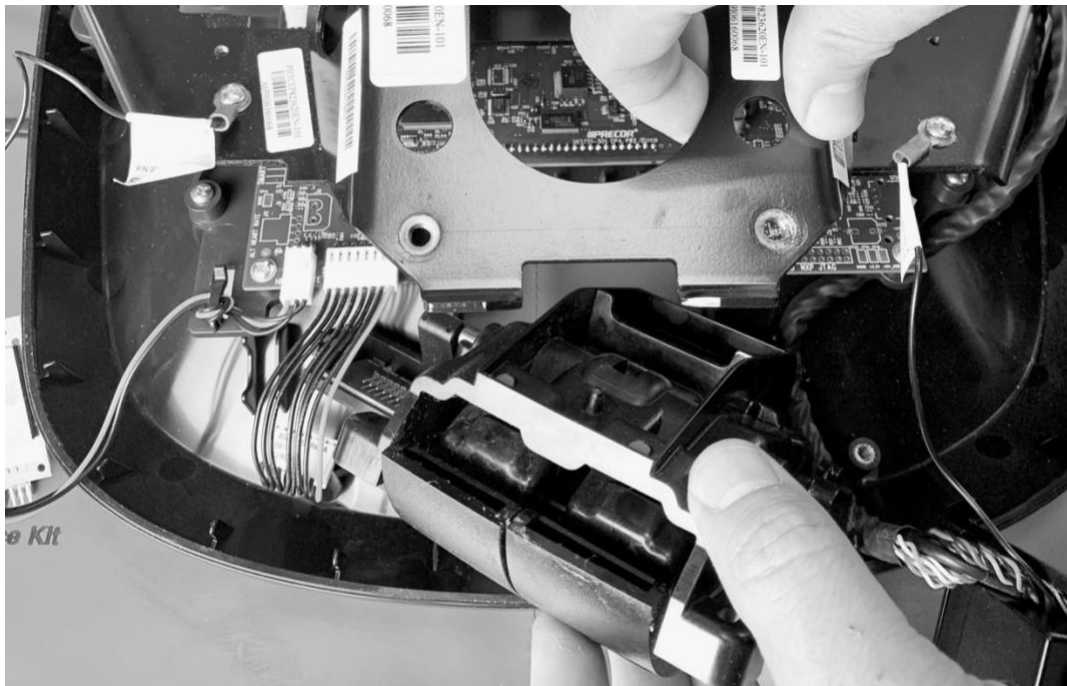
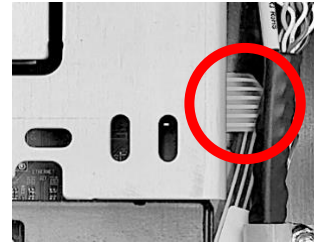
10. Disconnect the machine control wire from the machine control and remove the four Philips screws securing the machine control. Note that two screws are removed through the frame. A magnetic screwdriver is recommended.



11. **Gently** lift the frame where it sits above the machine control to remove the machine control. Do not remove the frame.



**Caution:** The frame should only be raised by a small amount. Raising the frame too much will bring it into contact with the green ribbon cable on the right side of the service bracket, which can damage or dislodge it.



**Installation Instructions:**

1. Gently lift the frame and install the machine control. Apply a small amount of Nyogel to the machine control pins and connect the machine control cable. The yellow wire goes to Pin 1 (yellow wire on the right side).
2. Secure the machine control using the four machine control screws.
3. Install the 3/8" frame nuts and the center screw on the service bracket.
4. Install the rear cover. Feed the chin through the chin opening and make sure the heart rate board is clear.
5. Plug the heart rate cable into the heart rate board and install it.
6. Install the chin.
7. Reconnect the RFID cable to the RFID board.
8. Check that the cover is seated properly, all cables are routed and not pinched, and install the eight cover screws.
9. Install the reading rack with the two black screws and the top access cover with two screws.
10. Reinstall the P82. Refer to P82 installation instructions at [www.Precor.com](http://www.Precor.com).



**Caution:** Do not plug the data cable into the Ethernet port. This can damage the display when powered up.

11. Verify operation and return to service.